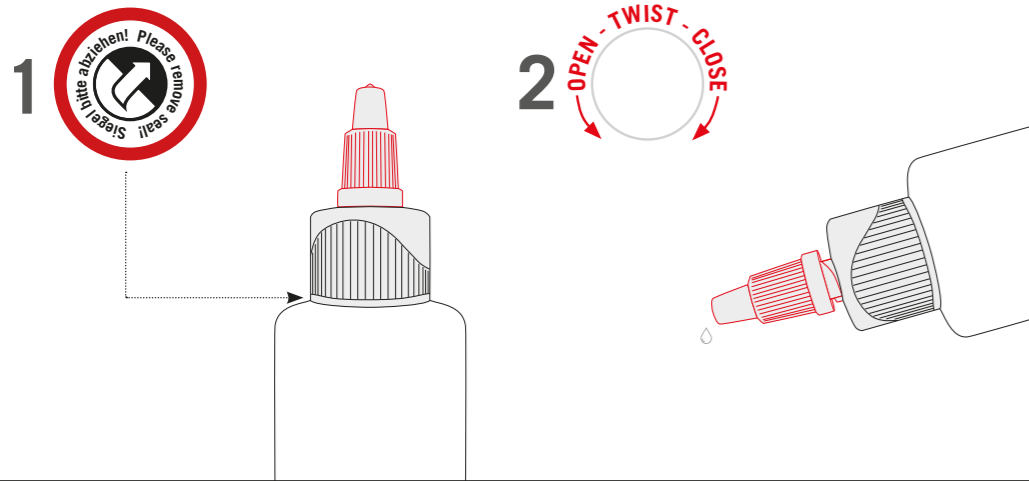


Twist-lock

- ! All liquid bottles are equipped with a practical Twist-lock. First pull off the seal. The upper cap can then be easily opened or closed with one hand. Thus, a drop-by-drop use of the liquid is possible.



Downloads

IFUs, technical data sheets, safety data sheets etc. are available for download in different languages on our website: www.jensendental.de



Support

General requests:
info@jensendental.de
+49 7123 92260
Technical support:
support@jensendental.de



Sales and Technical Support Europe:
Jensen GmbH
Gustav-Werner-Straße 1
72555 Metzingen, Germany
+49 7123 92260
info@jensendental.de
www.jensendental.de
www.miyoworld.eu



InSync[®] ZR
Veneering ceramic



PRETTY
COOL!

QUICK START GUIDE English



For a perfect start.

JENSEN
DENTAL



Firing Tables

The following firing temperatures are reference values and can vary according to furnace type. Please note the information on firing graphs in chapter 1.4 in the Instruction Manual. We recommend, where the construction allows, that a slow cooling phase of six minutes to achieve the stand-by temperature be carried out during the last firing (glaze and stain firing).

Firing table for ZrO₂ restorations

	Starting temp. [°C]	Dry time [min]	Closing time [min]	Vacuum start [°C]	Heat rate [°C / min]	End temp. [°C]	Vacuum end [°C]	Holding time [min]	Opening time [min]
1. Liner firing*	450	6	2	450	60	970	970	1	1
2. Liner firing*	450	6	2	450	60	960	960	1	1
Core Dentin firing*	450	4	2	450	40	810	810	1	1
1. Dentin firing	450	4	2	450	40	765	765	1	1
2. Dentin firing	450	4	2	450	40	760	760	1	1
Correction**	450	4	2	450	45	700	700	1	1
Glaze firing without glazing material	450	4	---	---	45	755	---	1	1
Glaze firing with glazing material	450	3	4	580	45	720	720	1	1

* Not suitable for use with lithium disilicate. ** Correction firing with correction material.

MiYO Color firing (Hybrid technique)

	Starting temp. [°C]	Dry time [min]	Closing time [min]	Heat rate [°C / min]	Holding time 1 [s]	Vacuum start [°C]	End temp. [°C]	Vacuum end [°C]	Holding time 2 [s]	Opening time [min]
Zirconia	400 - 450	3	4	45	30 - 45	580	720	720	30 - 60	1
Lithium-Disilicate	400 - 450	3	4	45	30 - 45	580	710	710	30 - 60	1

Firing table for Lithium-Disilicate restorations

	Starting temperature [°C]	Dry time [min]	Closing time [min]	Vacuum start [°C]	Heat rate [°C / min]	End temperature [°C]	Vacuum end [°C]	Holding time [min]	Opening time [min]
1. Dentin firing	450	4	2	450	40	765	765	1	1
2. Dentin firing	450	4	2	450	40	760	760	1	1
Correction**	450	4	2	450	45	700	700	1	1
Glaze firing without glazing material	450	4	---	---	45	755	---	1	1
Glaze firing with glazing material	450	3	4	580	45	710	710	1	1

Firing table for Titanium restorations

	Starting temperature [°C]	Dry time [min]	Closing time [min]	Vacuum start [°C]	Heat rate [°C / min]	End temperature [°C]	Vacuum end [°C]	Holding time [min]	Opening time [min]
Opakerbrand*	450	4	2	450	55	800	800	2	1
1. Dentinbrand	450	4	2	450	45	760	760	1	1
2. Dentinbrand	450	4	2	450	45	750	750	1	1
Korrektur**	450	4	2	450	45	700	700	1	1
Glaze firing without glazing material	450	4	---	---	45	735	---	1	1
Glaze firing with glazing material	450	3	4	580	45	720	720	1	1

* Not suitable for use with lithium disilicate. ** Correction firing with correction material.



Shade Combination Table

Shade	A1	A2	A3	A3,5	A4	B1	B2	B3	B4	C1	C2	C3	C4	D2	D3	D4
Liner	1	2	2	2	4	1	1	2	2	1	3	3	4	1	5	5
Titan Opaquer	A1	A2	A3	A3,5	A4	B1	B2	B3	B4	C1	C2	C3	C4	D2	D3	D4
Core Dentin	CD2	CD6	CD6	CD3	CD5	CD6	CD6	CD3 CD5 ¹⁾	CD5	CD2	CD4	CD5	CD5	CD4	CD5	CD5
Opaque Dentin	A1	A2	A3	A3,5	A4	B1	B2	B3	B4	C1	C2	C3	C4	D2	D3	D4
Dentin	A1	A2	A3	A3,5	A4	B1	B2	B3	B4	C1	C2	C3	C4	D2	D3	D4
Enamel	LIGHT YELLOW	YELLOW	YELLOW	DARK ORANGE	DARK ORANGE	LIGHT YELLOW	YELLOW	ORANGE	DARK ORANGE	YELLOW	YELLOW	ORANGE	DARK ORANGE	LIGHT YELLOW	YELLOW	ORANGE
Enamel²⁾	57	57	58	59	59	57	58	58	59	58	59	59	59	59	59	59

1) CD3 | CD5 in the ratio 50:50 | 2) The Enamel masses 57-59 are used in combination with Core Dentin.